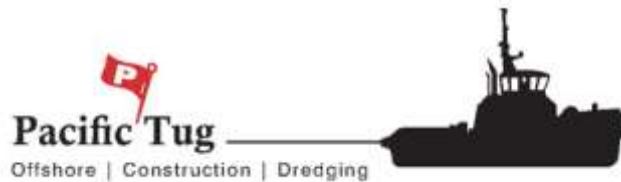




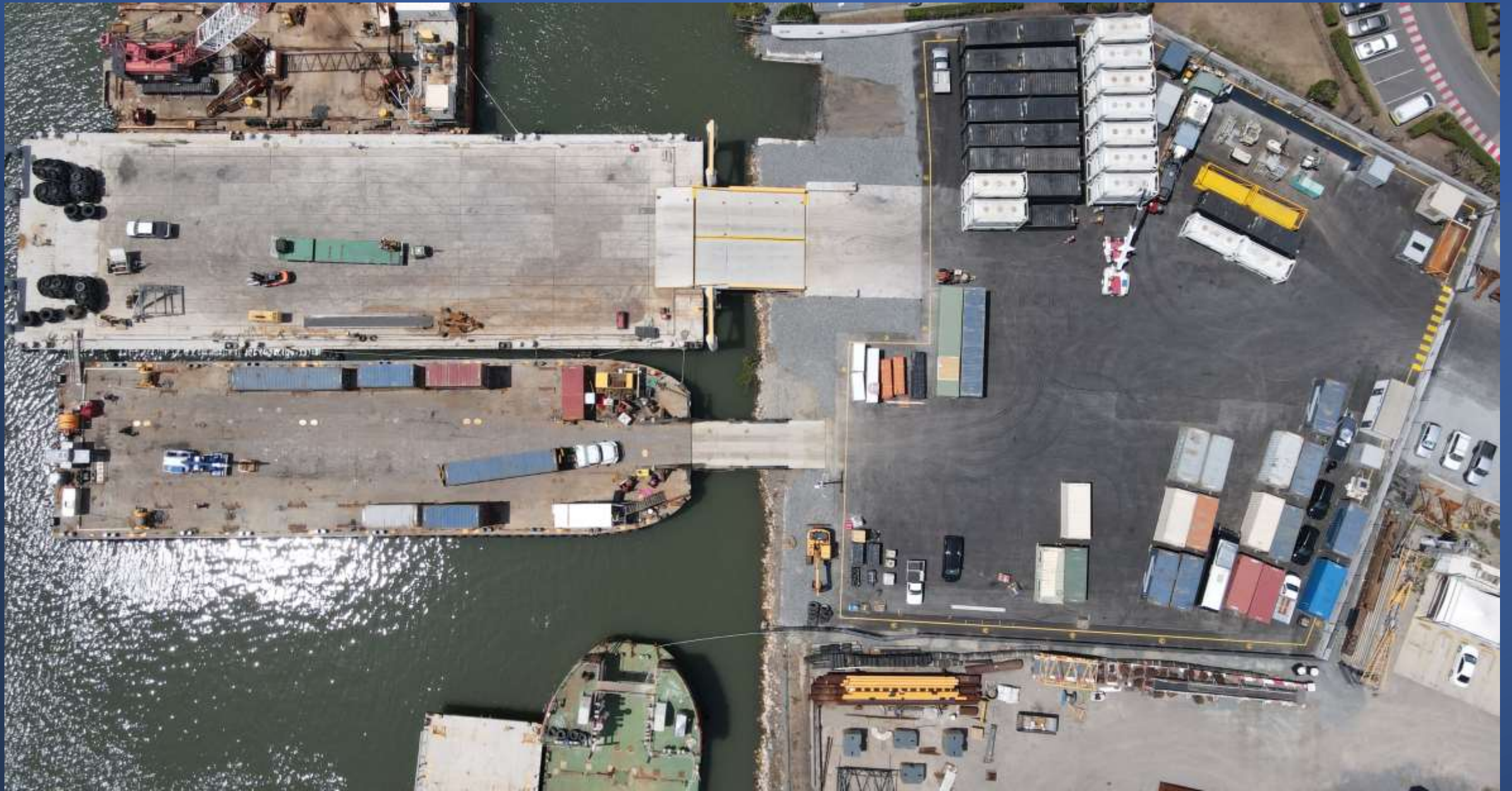
# Pacific Tug Group

Information Memorandum update May 2023

Pacific Marine Base Bundaberg



# Pacific Marine Base Brisbane Sea Freight and Logistics:





# PTG completing Complex Towage Solutions:





PTG Mobilising for projects throughout the Pacific Islands:



PTG deliver cargo by barge to remote locations:





Over size Over mass Gladstone :







Port of Bundaberg and Port Alma supported by PTG through Harbour Towage

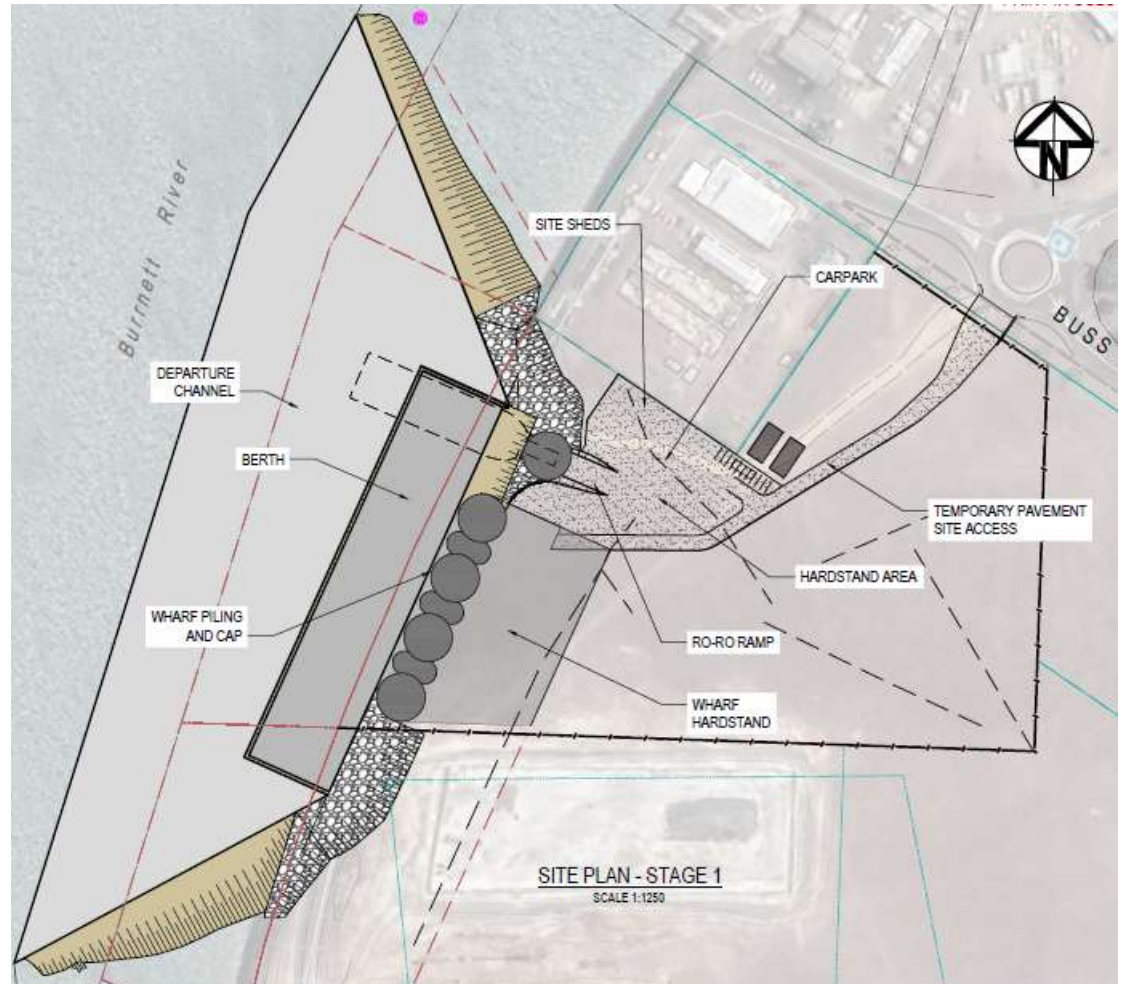




# Pacific Marine Base Bundaberg

## *Stage 1 What we are building today:*

- 97 meter long wharf
- Berth pocket at -7.0m LAT
- Designed for extreme loading capacity - substantially higher most Qld ports
- Easily scalable; add more cells
- Accommodate barges & small cargo vessels <100m LOA
- Crane and ramp (RORO) shore access





Development as at 3rd April 2023





**What will  
Stage 1  
Pacific  
Marine Base  
Bundaberg  
look like?**



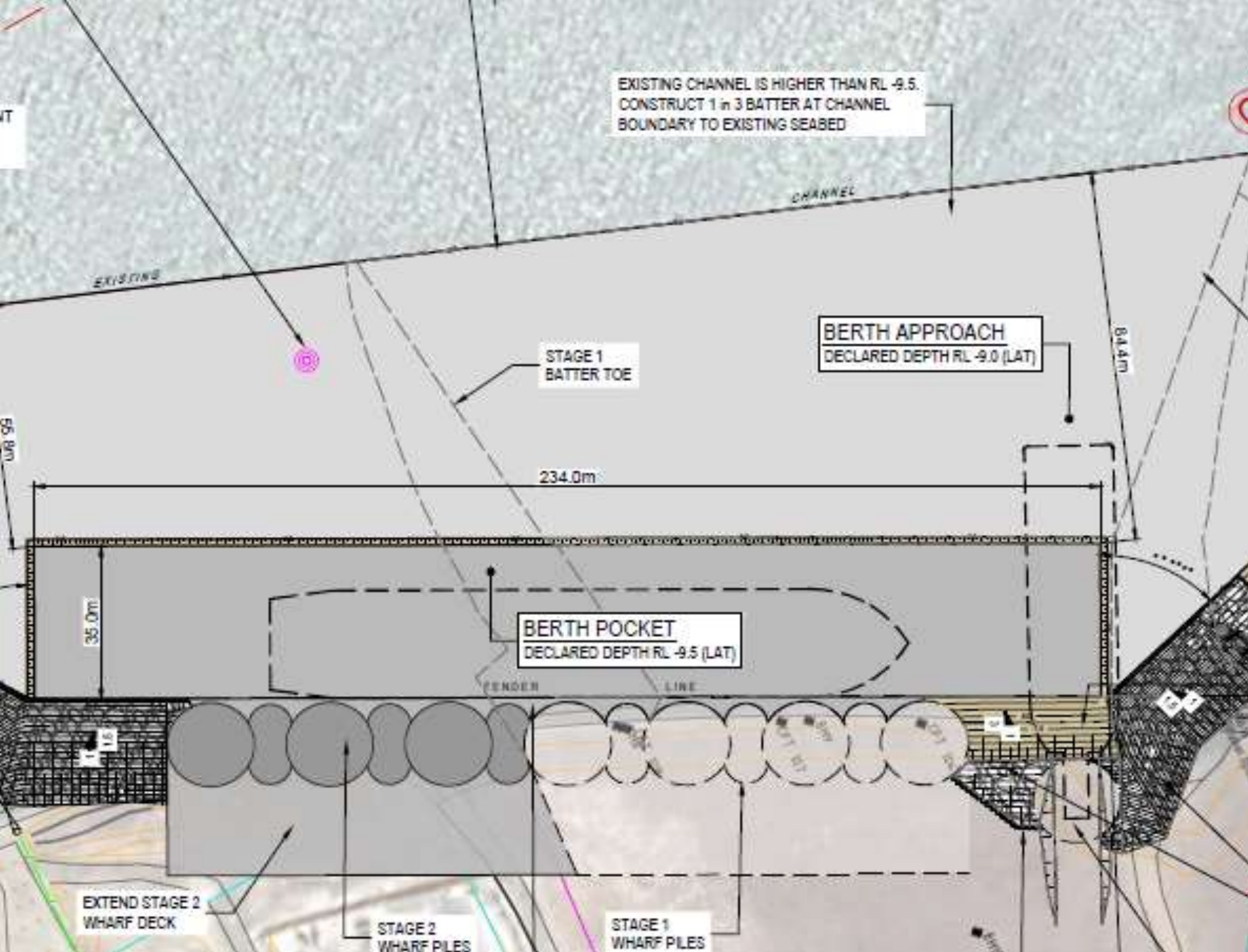


# Pacific Marine Base Bundaberg

---

- ***Stage 1 Transport Logistics Opportunities:***
- Cargo barging support Pacific Islands
- Land based logistics
- Project support including solar & hydrogen farms
- Biosecurity first point of entry
- Disaster recovery & support
- RORO barging of oversize over mass equipment along the Queensland Coast and to the Pacific
- Niche shipping line opportunities for smaller ships directly servicing the Pacific and New Zealand





# Pacific Marine Base Bundaberg propose a Stage2

**Stage 2 would be a Full  
Break Bulk Facility;**

- The DA is approved for the expanded facility.
- The design is complete for the expanded berth.
- The site is ready for the larger facility



# Pacific Marine Base Bundaberg

## ***Stage 2 features:***

- 200 meter long wharf; simple continuation of stage 1
- Berth pocket at -9.5m LAT
- Up to 130,000m<sup>2</sup> hard standing with direct access to wharf
- Accommodate ships to 190m LOA in addition
- Crane and ramp (RORO) shore access
- Office, stevedore & project facilities



# The opportunity for Bundaberg

---

- ***S2 expanded opportunities:***
- Handling of break bulk cargo
- Wind Farm delivery
- Solar Farm delivery
- Smaller scale container handling
- Department of Defense support with direct access to the pacific Islands
- Large scale project support of renewable projects
- Import Export facility.

